

Ashtons



3 Copper Beech Close Dunnington YO19 5PY

£1,400 PCM

3



1



2



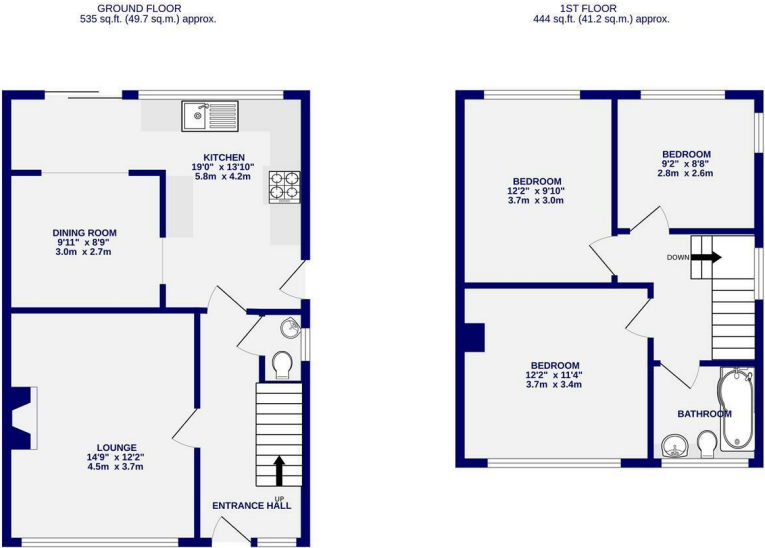
C



A spacious three bedroom, semi detached house on a cul-de-sac in a highly sought after village with convenient links to the centre of York and outer ring road. Offered for let on an unfurnished basis the accommodation briefly comprises of entrance hall; living room with gas fire; downstairs WC; light and airy open plan kitchen/dining/family room with patio doors to the rear garden. The kitchen is equipped with fridge freezer, dishwasher, washer dryer, electric oven and hob. To the first floor are two large double bedrooms, a single bedroom and house bathroom.

Externally the property benefits from front garden, driveway parking with ample space, single garage and a rear garden.

Available Now / 12 Month Tenancy / Deposit £1500 / Council Tax Band D / EPC Rating C



TOTAL FLOOR AREA: 979 sq.ft. (90.9 sq.m.) approx.  
Whilst every attempt has been made to ensure the accuracy of the description of the property, measurements of rooms and any other items are approximate. If included in the plan the proportions will form part of the overall floor area and no responsibility is taken for any error, omission or mis-statement. This plan is for illustrative purposes only and should be used as such by any prospective purchaser. The services, systems and appliances shown have not been tested and no guarantee as to their operability.  
Made with Metropix ©2025



Ashtons Lettings

01904 731404

lettings@ashtonsnet.com